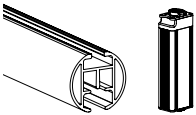


ORDER FORM **MRS - MOTORISED ROD**

FOREST DRAPERY HARDWARE UK LIMITED, UNITED KINGDOM, OCT. 2025

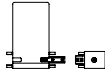


Company name:
Name:
Account number:
Your reference / commission:
Order date:

Colour: Stone Grey PC Anthracite PC Inox Taupe PC White PC Antique PC Gold

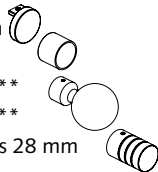
Rod length: cm (including pulleys)
Quantity: piece(s)

Standard endcap: With new motor pulley and return pulley



Optional:

CRS finial short endcap 28 mm
CRS finial 28 mm
MRS/CRS finial round 60 mm**
MRS/CRS finial round 70 mm**
MRS/CRS finial with 3 grooves 28 mm



White
Gold
Inox
Stone Grey-PC
Antique-PC
Anthracite-PC
Taupe-PC
Black-PC

** Ceiling mounting
not possible

Shuttle motor type: "M" (65 watt) "L" (40 watt) "ION" (battery)
"M with Z-Wave" "L with Z-Wave" Number of chargers (in case of battery iOn motor) piece(s)

Motor side: Left Right

Motor colour: White Black Grey (only "L", "L with Z-Wave") Anthracite (only "S", "S with Z-Wave", "M", "L", "L with Z-Wave")

Motor position: Under the track (standard)

Stack-back curtains: Left Centre closing Right



CURTAIN HEADING:

Regular pleat: MRS carrier
Return pleat: MRS carrier
Wave pleat: waver carrier:
Wave carrier distance:



White Black Grey
White Black Grey
White Black Grey (only Easywave carrier 8cm)
5,4 cm 6 cm 8 cm (standard)

Type of wave carrier:

Easywave carrier (standard)

Easyflex carrier

Hook (optional):

Easywave hook

White Black

Easyflex hook

White Black

Including wave tape:

No

Yes
Depth wave:

cm (standard 16cm)

Pocket Single Double

Tape colour: Transparent (standard) Black (only double)

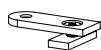
ORDER FORM MRS - MOTORISED ROD

FOREST DRAPERY HARDWARE UK LIMITED, UNITED KINGDOM, OCT. 2025

FOREST
DRAPERY HARDWARE

White
Gold
Inox
Stone Grey-PC
Antique-PC
Anthracite-PC
Taupe-PC
Black-PC

FIXATION:



Ceiling bracket



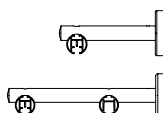
Ceiling Bracket 1.5 cm



Ceiling suspension bracket 4 cm

Ceiling suspension bracket 5 cm

Ceiling suspension bracket 10 cm



Wall bracket 12 cm

Wall bracket 16 cm

Wall bracket double 16 cm*

Wall bracket 20 cm*

* Double = MRS/CRS 28 mm (It is not possible to use two MRS systems on a double bracket)



CRS adjustable wall bracket 8 cm incl. cover

CRS adjustable wall bracket 12 cm incl. cover

Inside wall bracket

Standard number of brackets:

(single and double system)

< 200 cm: 3 201-250 cm: 4 251-300 cm: 5 301-400 cm: 6

401-450 cm: 7 451-500 cm: 8 501-580 cm: 9

Extra brackets:

piece(s) (if more brackets = surcharge)

White + quantity Black + quantity

Operation:

None

Forest EasyTouch Remote Control, 6 channel RF.

Programmed channel: 1 2 3 4 5 6

Transparent Easytouch wall holder (optional): piece(s)

Diamond Sense remote, 2-15 channels RF, incl. wall holder

Programmed channel: 1 2 3 4 5

6 7 8 9 10

11 12 13 14 15

Wireless Wall switch, 2 channels, RF

Programmed channel: 1 2

Wifi Dongle (Forest Connect app)***

Wireless Connector****

Forest Smart Plug (in combination with Wireless Connector)

Forest Shuttle Twilight Sensor

AC Control Set (for Home Automation)

Click On Multi Receiver (needed to connect the Diamond Sense and wall switch to the Shuttle Z-Wave

*** Not possible in combination with Shuttle iOn.

**** For Home Automation or third party app (external smart plug necessary)

Requests:

Estimated production time: after date of receiving order, 10 working days. If quantity > 20 pieces, by negotiation.

Send the completed form to info@forestgroup.co.uk

We can only accept order forms that are completely filled out.

For help, please contact us at +44 (0)1706 522 088 or info@forestgroup.co.uk

You are responsible for providing complete and correct information on the order form.

Our latest order forms are online. Scan or click on the QR code for the latest order form.



Tip Forest:

we recommend making the curtain fabric 20 cm wider than calculated on the motor side, so that the fabric will cover the motor.