

www.forestgroup.com
info@forestgroup.com



climat **top** screens

SUNFOLIE TECHNIEK B.V.

by **FOREST**
GROUP

Climat  **Screen**
SUNFOLIE TECHNIEK B.V.
by FOREST

Climat Control

for a natural (working) environment

**Save up to 20% on your
air conditioning costs**



PRODUCT INFORMATION

"Climat Screen by Forest" offers a wide range of advanced daylight filter systems that are especially designed to minimize the entry of solar-heat into a room. The unique features of the "Climat Screen" works bilateral. In the summer the warmth will be kept out and in the winter the warmth will stay inside.

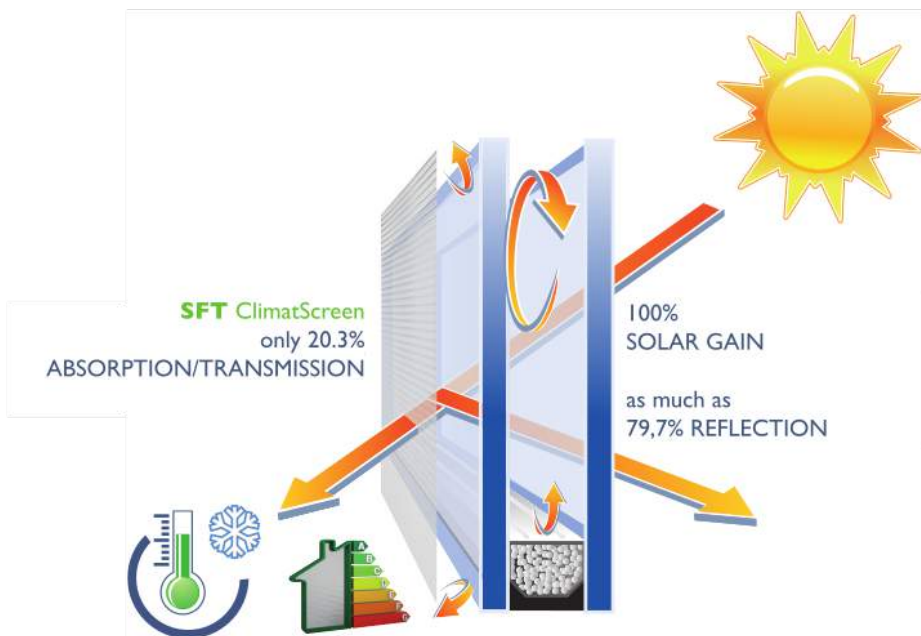
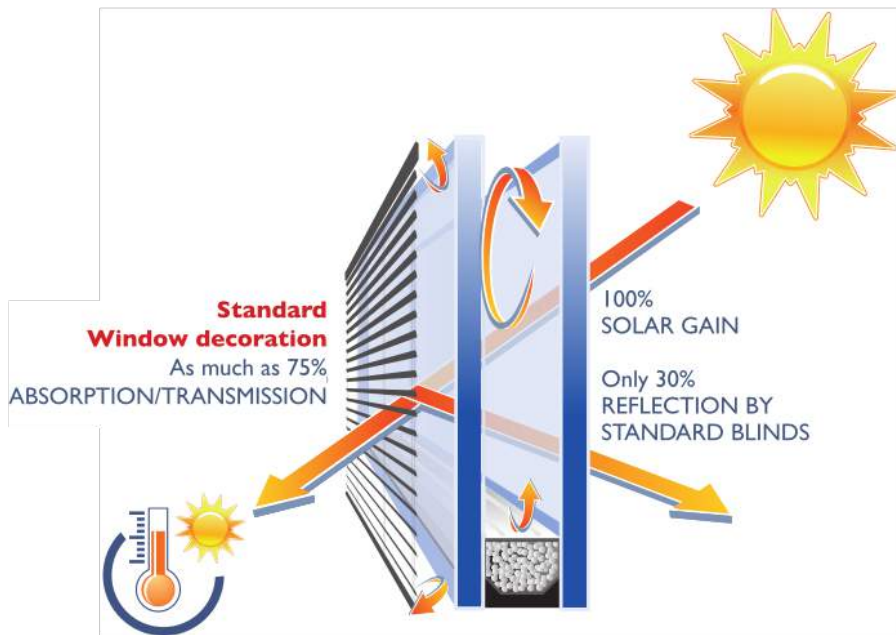
FOR USE IN

Hotels - Offices - Houses - Yachts - Mobiles Homes - Boats

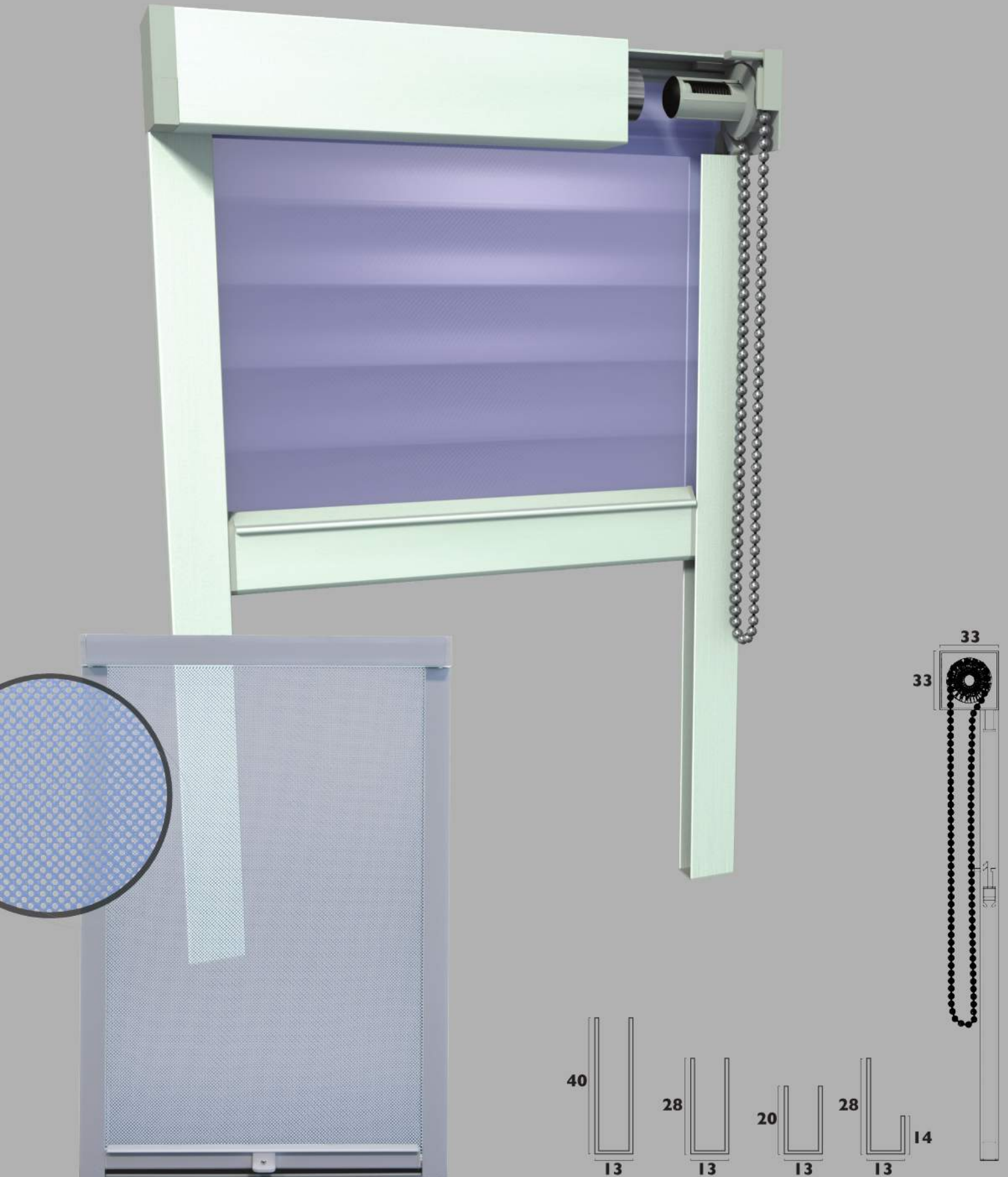
BENEFITS

- Optimum heat resistant effect;
- Excellent isolating features;
- Neutralize the heating effect on the sun's radiation;
- Smooth and silent in operation;
- Available as a motorized or manually system;
- Can be controlled by wall-switch, remote control etc.
Easy to connect to building automation system;
- A saving in the energy costs;
- Optimization of the work environment. Reduce reflection in (computer) screens;
- Low-maintenance. Highly durable and easy to clean;
- Is available in a wide range of version and colorations;
- Tested and European approved by TNO





Super Mini / Super Mini spring operation



**** Super Mini ****

As standard, this system comes with chain operation, on the left or the right, as desired. This extremely compact system can be fitted either **inside** or **outside the window recess**. When fitting it **inside the recess**, make sure you measure the recess very precisely, measuring the recess width at the top, in the middle, and at the bottom. (see measuring instructions)

When ordering, always state whether you will be fitting the system **inside the window recess** or **outside the window recess**. (see order form)

When fitting it on plastic or aluminium window frames, the complete system can be affixed (only when **fitting outside the recess**) using double-sided tape. (**very important: the surface must be degreased thoroughly first**).

Please note:

With larger surfaces from approx. 2 m², the film may be pushed out of the channels by the heat trapped between the glass and the film (**generally in case of narrow and tall systems**), which is when it is advisable to use ventilation channels of 28 x 13 x 14 (see product page).

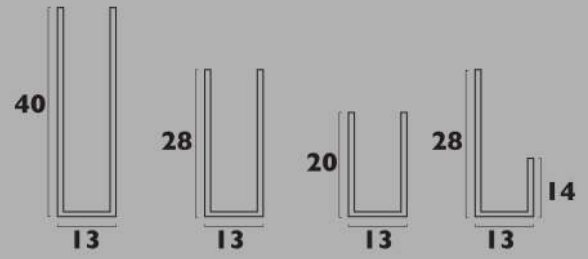
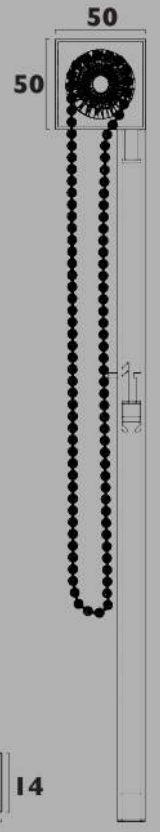
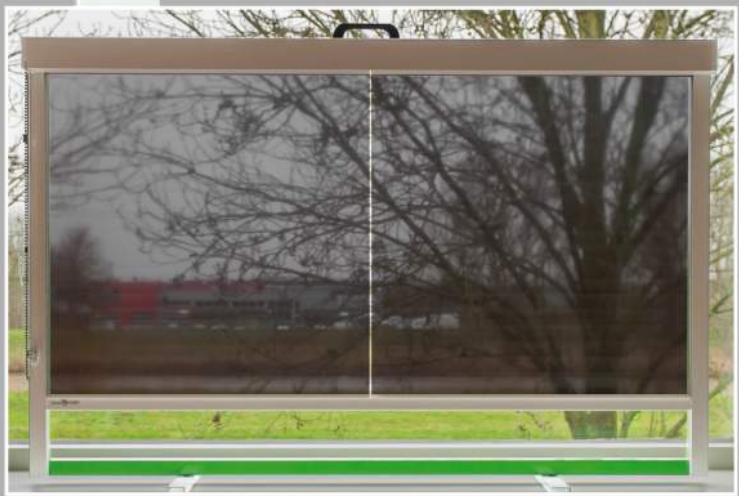
Width and height on order form in mm.

We will take the measurements provided as **final measurements** and deliver as per these measurements.

PLEASE ONLY SUBMIT ORDERS BY EMAIL.

Electronic order form available on request.

Mini / Centre roller



**** Mini / Centre roller ****

The “Mini” system can be equipped with a centre roller to split the film into two equal parts and create a vertical seam of approx.: 3 to 4 mm in the film.

As standard, this system comes with chain operation, on the left or the right, as desired. This system can be fitted either **inside** or **outside the window recess**.

When fitting it **inside the recess**, make sure you measure the recess very precisely, measuring the recess width at the top, in the middle, and at the bottom.

When ordering, always state whether you will be fitting the system **inside the window recess** or outside the window recess (see order former).

Please note:

With larger surfaces from approx. 2 m², the film may be pushed out of the channels by the heat trapped between the glass and the film (**generally with narrow and tall systems**), which is when it is advisable to use ventilation channels of 28 x 13 x 14 (see product page).

When fitting it on plastic or aluminium window frames, the complete system can be affixed (only when fitting outside the recess) using double-sided tape. (**very important: the surface must be degreased thoroughly first**).

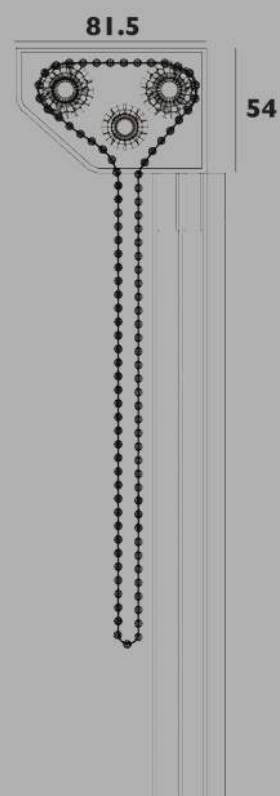
Width and height on order form in mm.

We will take the measurements provided as **final measurements** and deliver as per these measurements.

PLEASE ONLY SUBMIT ORDERS BY EMAIL.

Electronic order form available on request.

Twin Mini





**** Twin Mini ****

This unique system offers many different variations and applications.

The possibility of using two different kinds of film in one single system makes this a truly one-of-a-kind system.

The dual side channel is integrated into one single unit (see drawing). The system is fitted with three rollers, where no. 1 is fitted with film, which roller 2 guides to the rear section of the side channel.

Roller 3 is also fitted with film, which runs directly into the front section of the side channel.

- The Twin Mini comes with two endless chains as standard (1 on the left and 1 on the right)

Where the Twin Mini stands out is that both filters can be controlled individually, allowing for high-precision light transmission regulation.

Combinations of filters are also possible in this system by including a blackout filter if needed.

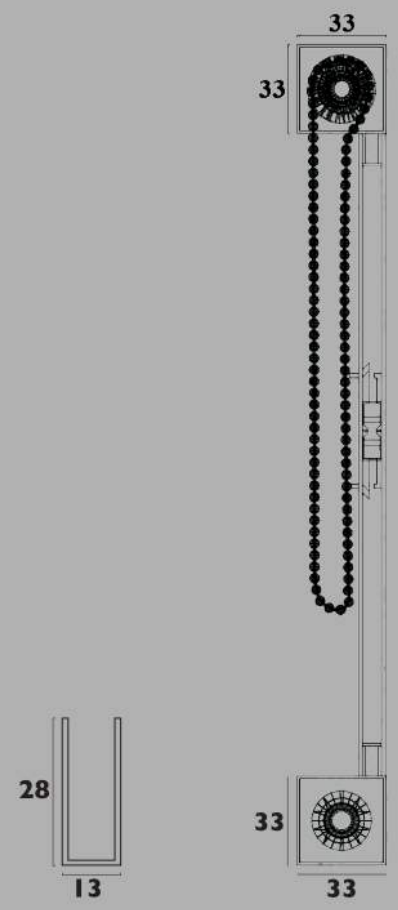
Width and height on order form in mm.

We will take the measurements provided as **final measurements** and deliver as per these measurements.

PLEASE ONLY SUBMIT ORDERS BY EMAIL.

Electronic order form available on request.

Combi (insect screen)



**** Combi ****

This system is unique thanks to its compactness and combination options. This type is a so-called double cassette system that comes with chain operation as standard. This system can be used as a daylight filter only or in combination with other systems thanks to its easy-to-use magnetic strips and dual functionality to serve multiple purposes,

- Combination: filter / blackout
- Combination: filter / insect screen
- Combination: blackout / insect screen

Insect screen combination: channels **(28mm only)** with brushes fitted (see additional costs sheet)

Every system comes with a so-called chain clip, which must **always** be fastened when the sub-subsystem is in use, as it serves as an additional brake on the chain operation.

This unique system can be fitted either **inside the window recess** or **outside the window recess** (with vertical installation). When fitting the system inside the recess, make sure you measure the recess very precisely, at the top, in the middle, and at the bottom. When ordering, always state whether you will be fitting the system **inside the window recess** or **outside the window recess** (see order former).

Due to the strain on the system during usage, this system must always be screwed on.

Width and height on order form in mm.

We will take the measurements provided as permanent measurements and deliver as per these measurements.

PLEASE ONLY SUBMIT ORDERS BY EMAIL.

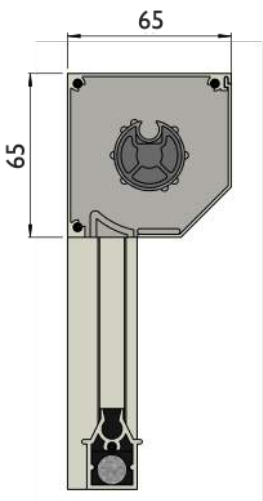
Electronic order form available on request.



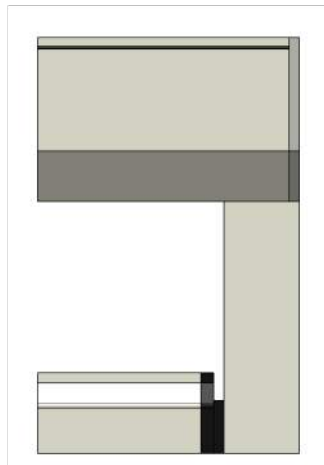
**‘Fix’ display - It doesn’t roll up,
but it is removable!**

- ▶ Film with top and bottom lock strip fitted
- ▶ 2 side channels
- ▶ Bottom lock strip inserts into channel as in a roll-up system
- ▶ Top lock strip sits on the channels

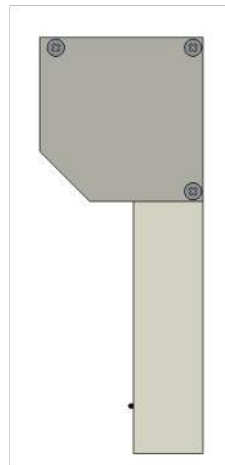
MaXX



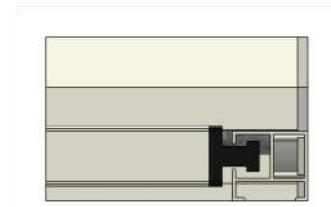
Cross-section



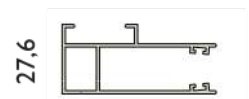
Front view (right-hand side)



Right-hand side view



Bottom view



27,6

46,2

** MaXX **

NEW IN OUR RANGE!

MaXX systeem:

The reason behind this is that we often get requests from the (project development) market for larger widths and there is regular demand for a **'fabric look'** with adequate cooling load performance (reflection rates).

By combining the MaXX cassette system with Soltis 99 Colour/Alu material, we are meeting this demand.

MaXX systems come with a 230V electric motor as standard. Somfy silent 'Sonesse' motor is ideally suited for this purpose and comes in two versions (refer to the MaXX product sheet for technical info)

Soltis 99 Colour/Alu material is available from stock in the following colours:

White	item.no. 99-2055
Quartz	item.no. 99-50285
Alu	item.no. 99-2059
Light Grey	item.no. 99-2058
Anthracite	item.no. 99-2068

All versions shown on the below sample sheet are available for surfaces from approx. 200 m².

Needless to say, the MaXX system is also available with our usual high-quality solar film for lengths of up to an impressive 5,000mm! Soltis Colour/Alu material is easy to combine with our existing 'Mini' system (see additional costs).





Small "Demo system"

► A4 size



“Handdemo Double”

- ▶ Super Mini / Mini
- ▶ system 40 x 60 cm

Here you go!

A few tips and tricks to help you make the most of your ClimatScreen's life span and features. Make sure you are always one step ahead of the sun, as sunlight may shine onto the windows of your workplace or bedroom or living room from very early in the morning. We therefore advise you to close your screens the night before to prevent extra heating. In the summer, on the other hand, temperatures don't start to ease until the evening time. So when leaving your workplace, make sure you open your screen to let the room to cool down overnight by allowing the heat to radiate out through the glass. In homes, the advice would be to open windows/ventilation grilles to let in cooler air overnight.

During the winter months, ClimatScreen offers excellent insulation. Make sure you close your screen(s) at night to keep the heat generated throughout the day inside and ensure optimum insulation (which will mean at least 25% less heat loss).

Before lowering the solar screen, close ventilation grilles and windows to prevent the displacement of air pushing the film out of the channels, as this could damage the film. If the film has been dislodged from the channels, zip the film back into the channel by hand. Do not use the controls for that, because that would damage the film. Although open windows and/or ventilation grilles may create the impression of fresh air coming into the room, you are basically only letting in more heat.

Dirt and dust are easy to remove by spraying glass cleaner onto the film and wiping it off using a soft cloth or kitchen roll, while holding down the bottom strip to make sure you don't push the film out of the channels.

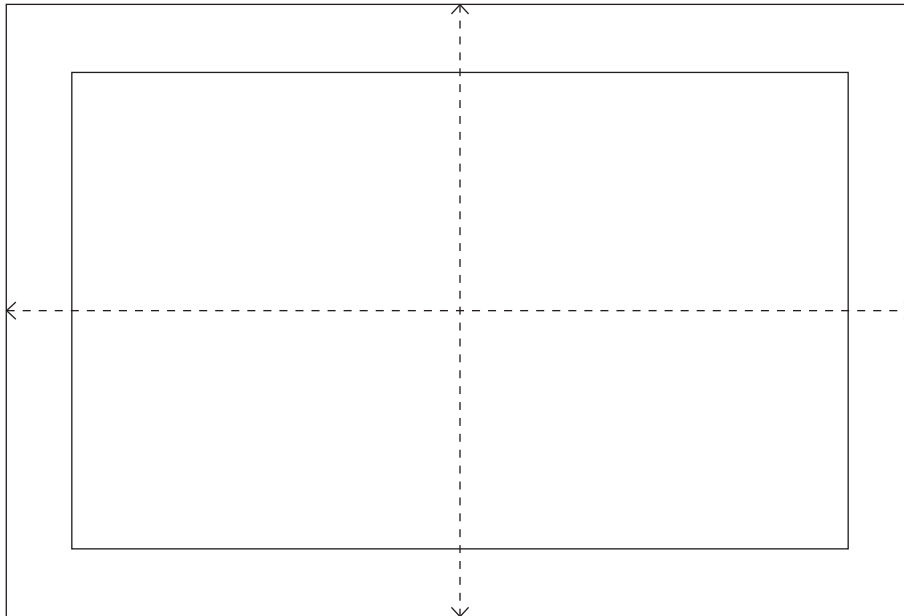
To make sure the film is always nice and taut, make sure there are no items on the windowsill that could obstruct the screen when lowering it.

Always operate the chain in parallel to the channel (vertically).



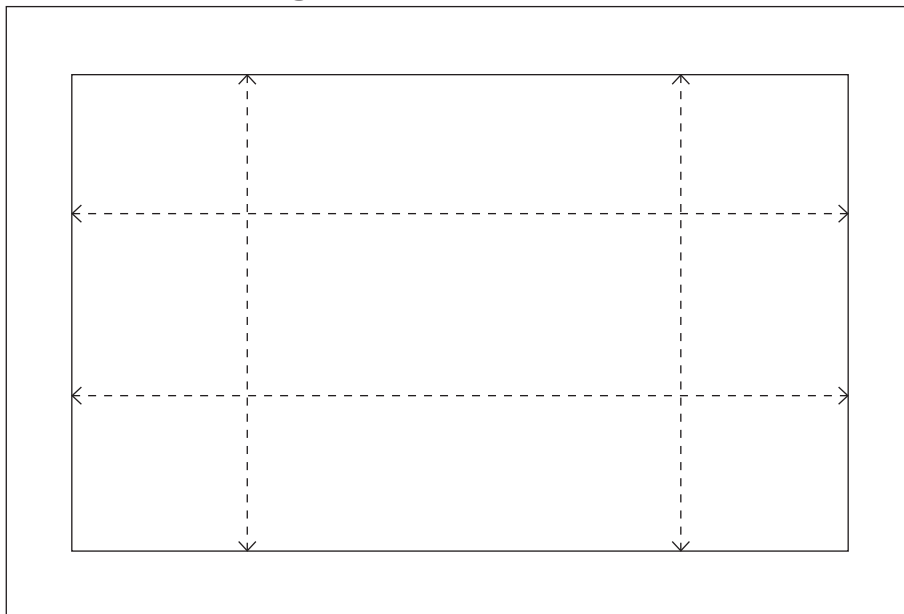
Measurement advice

Measuring for outside the window recess



Measure the width and height of the window frame from left to right and from bottom to top.
The smallest measurement is the one that will be used.

Measuring for inside the window recess



Measure the exact width of the inside of the frame at the top and the bottom, the smallest of the two measurements is the one that will be used. You could reduce the measurement by 1mm to allow for some mounting clearance.

Width and height on order form in mm.

We will take the measurements provided as **final measurements** and deliver as per these measurements.

Technical data of the film

Film type	Bronze/Silver		Grey/Silver		White/Silver	Silver/Silver	
	1524 mm	1524 mm	1650 mm	1524 mm	1524 mm	1524 mm	1524 mm
film width	1524 mm	1524 mm	1650 mm	1524 mm	1524 mm	1524 mm	1524 mm
item number	2R-36680	10R-36660	2R-36640	10R-36620	0R-36790	2R-36630	10R-36610
light transmission rate (%)	2,50	9,00	4,00	7,00	2,00	2,20	14,60
Reflection rate (%)	79,00	64,00	69,00	56,00	88,70	81,00	64,00
Absorption rate (%)	18,50	26,00	28,00	37,00	10,40	16,50	21,00
UV transmission (%)	<1	<1	<1	<1	<1	<1	<1
Total energy reflection	92,40	81,40	91,00	83,00	96,00	94,00	80,00
B factor	0,10	0,21	0,10	0,19	0,04	0,08	0,23
Heat reflection	*****	***	*****	***	*****	*****	***
UV Protection	*****	*****	*****	*****	*****	*****	*****
Transparency	***	***	***	***	-	***	***
Incidence of light (contrast free)	*****	***	*****	***	*	*****	***

***** Very good
 *** Good
 ** Satisfactory
 * Adequate
 - Not suitable

Important:

Blackout White/Silver cannot be considered true blackout, but should instead be considered dim-out, i.e. 98% blackout (see light transmission rate).

Technical data of the film

Film type	Bronze/Silver		Grey/Silver		Grey/Silver
	1820 mm	1820 mm	1820 mm	1820 mm	1820 mm
film width	1820 mm	1820 mm	1820 mm	1820 mm	1820 mm
item number	2R-38880	10R-38860	2R-38840	10R-38820	1R-38841
light transmission rate (%)	2,00	8,00	2,00	5,00	1,00
Reflection rate (%)	79,00	67,00	78,00	71,00	82,00
Absorption rate (%)	25,00	34,00	26,00	34,00	20,00
UV transmission (%)	0	0	0	0	0
Total energy reflection	92,00	81,00	91,00	83,00	96,00

Technical data of the film

Shade film (light filtering)

Where sunlight/daylight causes inconvenience.
 BREEAM Criterion (glare control)

Film type	Grey/Grey - IR	Grey/Grey - IOR	Bronze/Bronze IOR
film width	1820 mm	1820 mm	1820 mm
item number	99941	99920	99960
light transmission rate (%)	2,00	7,00	11,00
Reflection rate (%)	19,00	21,00	22,00
Absorption rate (%)	62,00	59,00	58,00
UV transmission (%)	0,1	0,1	0,1
Total energy reflection	46,00	49,00	49,00