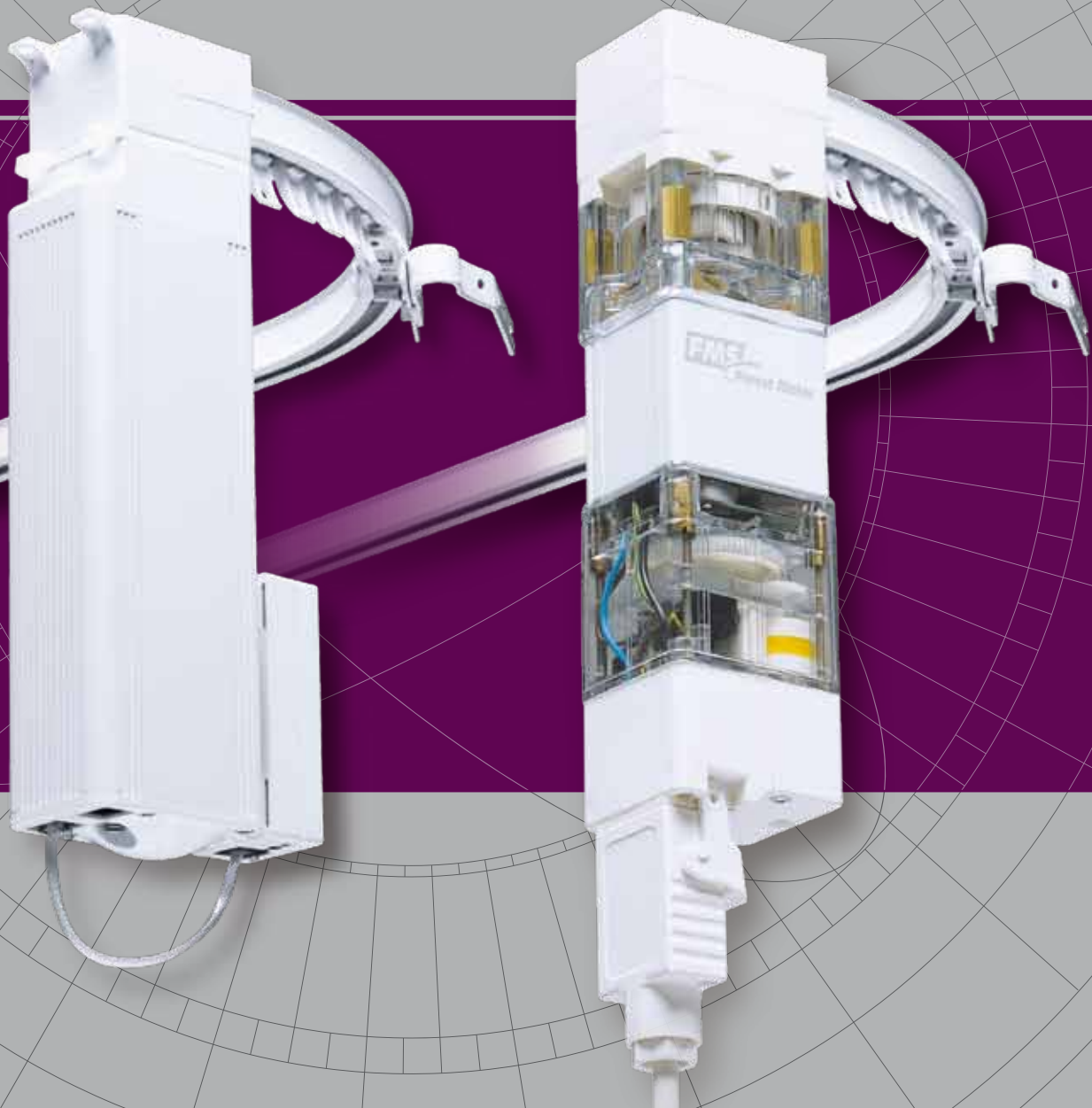


ASSEMBLY INSTRUCTION
FMS AND SHUTTLE TRACK



OFFICE AUTOMATION



HOTEL AUTOMATION

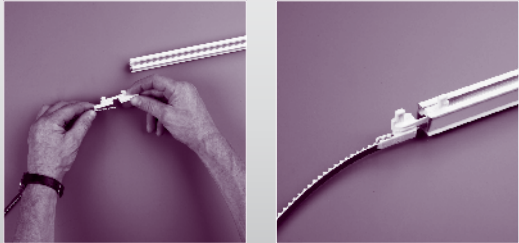


HOME AUTOMATION



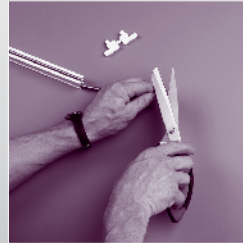
STEP BY STEP ASSEMBLY OF THE FMS AND SHUTTLE TRACK

STEP 1



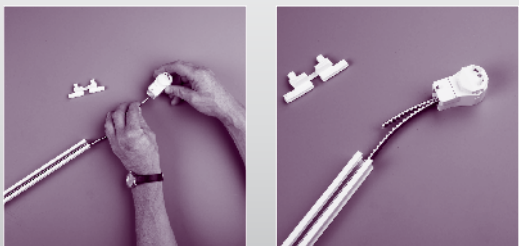
Slide the belt through the track by using the FMS belt connector (1).

STEP 2



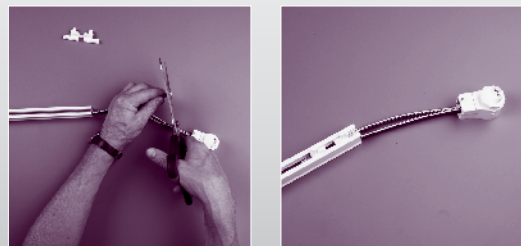
Cut the belt under an angle to remove the 1st tooth. This ensures a smooth sliding through the FMS Return Pulley.

STEP 3



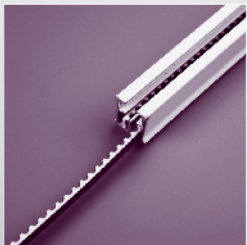
Take off the cord connector and push the belt through the FMS Return Pulley (2) until the above figure is achieved

STEP 4



Cut off the remaining part of the 1st tooth, then attach the belt connector and put the belt back into the other trackchannel until above figure is achieved (3).

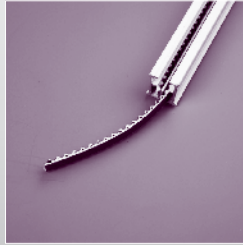
STEP 5



Now pull the belt through the track and take off the belt connector at the end.

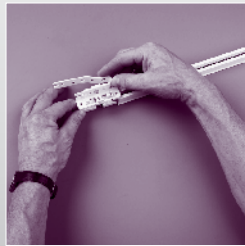
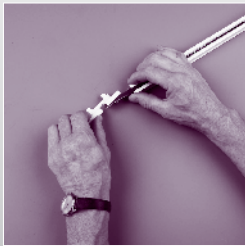
STEP BY STEP ASSEMBLY OF THE FMS AND SHUTTLE TRACK

STEP 6



Now start counting 17 teeth of the belt, mark the 17th tooth of the belt and cut it here after.

STEP 7



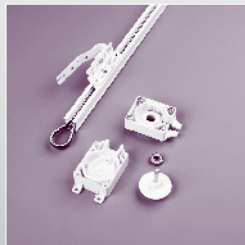
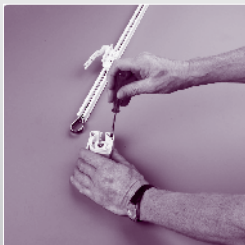
Now connect one end of the belt to the belt connector and insert the first piece of the master carrier into the track. Make sure the first tooth stays outside of the connector.

STEP 8



Connect the other end of the belt to the connector to make a loop and slide the master carrier fully into the track. Again make sure that the first tooth stays outside of the connector, in the middle.

STEP 9



Now take the FMS motor pulley apart by removing the screws.

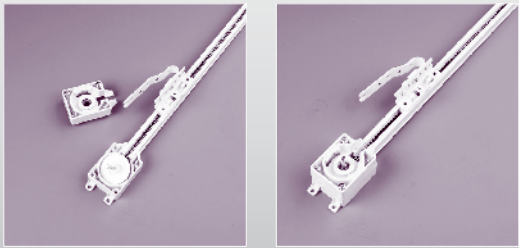
STEP 10



Then position the bottom piece of the motor pulley onto the track, making sure the belt falls into place.

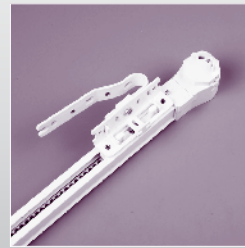
STEP BY STEP ASSEMBLY OF THE FMS AND SHUTTLE TRACK

STEP 11



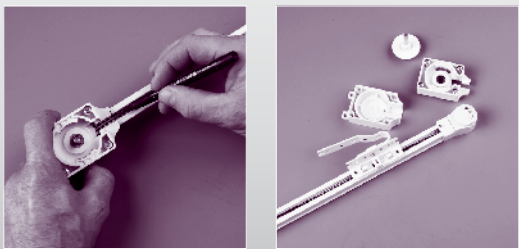
Now position the center piece onto the motor pulley, making sure the ball bearing falls into place, and place the top piece or the motor pulley again.

STEP 12



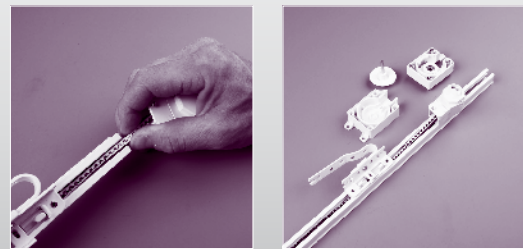
Slide the master carrier to the end of the track, against the end pulley.

STEP 13



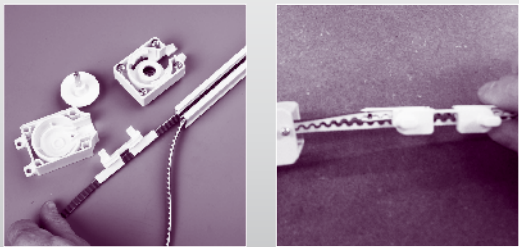
On the side of the motor pulley; mark the first visible tooth on the opposite part of the belt where the first Master Carrier is attached. Remove the motor pulley again from the track.

STEP 14



Take off the Return Pulley and lift it together with the belt up onto the track, like the pictures show.

STEP 15



On the side of the motor pulley, slide out the belt, until the marked tooth becomes visible. Now put the belt connector over this tooth. It is very important that the marked tooth will be clamped by the Connector as shown in the picture.

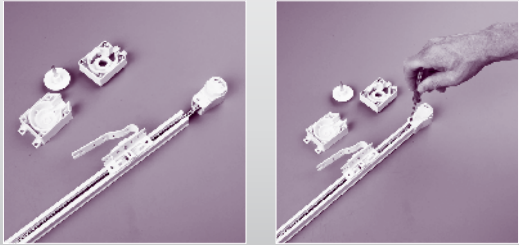
STEP 16



Now position the second master carrier over the belt connector and slide them together into the track.

STEP BY STEP ASSEMBLY OF THE FMS AND SHUTTLE TRACK

STEP 17



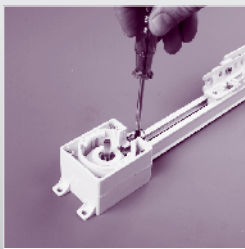
Now reposition the end pulley onto the track and fasten the screw.

STEP 18



Place the metal FMS clip inside the track, put the motor pulley on the track again and place the metal clip over the motor pulley, to ensure a good fixation.

STEP 19



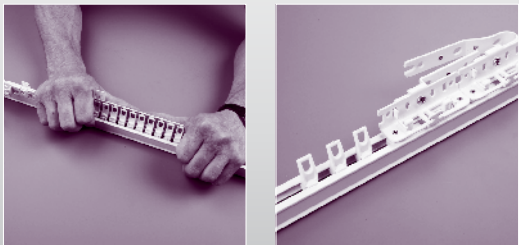
Now tighten all the screws of the motor pulley again.

STEP 20



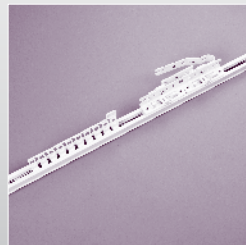
In order to ensure a smooth running of all the components inside the track, it is necessary to lubricate the track, the pulleys and the master carriers with the special Forest lubrication spray.

STEP 21



Finally position the FMS Carriers onto the track and click them into the track, by using your thumbs. Remove the plastic strip.

STEP 22



The basic assembly of the track is now complete, the system is ready to be installed with the motor.